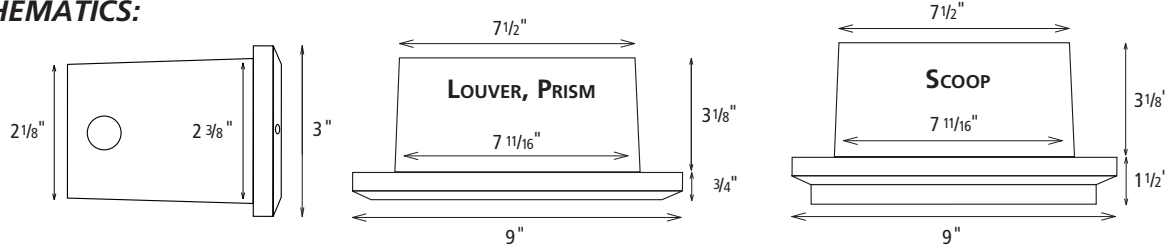


XENON BRICK LIGHT

DIMMABLE!



SCHEMATICS:



DESCRIPTION:

Die cast aluminum wall mount Xenon light fixture fits standard brick void and consumes 18 watts. 120VAC input and output of fixture up to 66 fixtures per 15A tap. 10,000 hour average Xenon bulb life of 2800K color temperature. Offered in three cover styles and five fixture finishes. UL listed Wet Location for all interior and exterior wall, ceilings and concrete pour applications. Dimmable with a low voltage electronic dimmer.

APPLICATIONS

- ▶ Brick walls
- ▶ Interior steps
- ▶ Exterior steps
- ▶ Aisles
- ▶ Halls
- ▶ Paths
- ▶ Patio lighting
- ▶ Entry lighting
- ▶ Post lighting

FEATURES

Xenon Bulbs

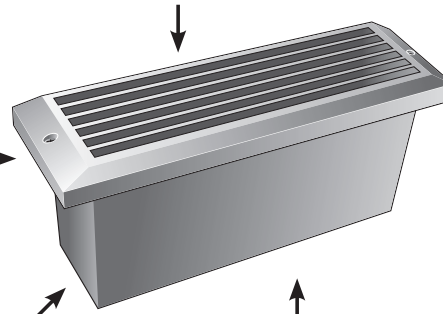
- Four times the bulb life of Halogen at 1/2 the cost of 120V Halogen
- Burns significantly cooler than Halogen
- No harmful UV rays
- Safer, low pressure bulbs
- 18 watts
- Dimmable

- Numerous 120V NPT fittings for standard Romex™ input

- Die cast aluminum can and cover
- Fits standard brick void
- Corrosion resistant
- Suitable for concrete pour
- 3 cover designs: Louver, Prism and Scoop
- 5 cover color options: White, Bronze, Black, Aluminum or Stainless Steel

New!

- Stainless Steel Louver option



Suitable for

- Wet locations
- Insulation contact
- Wall and ceiling mount
- Showers
- Use in poured concrete

- Ample room for 120V interconnection

ORDERING LOGIC:

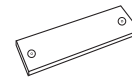
XBL-Z-YY

Z = FIXTURE TYPE

L = Louver Cover
S = Scoop Cover
P = Prism Cover

YY = FIXTURE FINISH

WH = White
BZ = Bronze
BK = Black
AL = Aluminum
SS = Stainless Steel
(Louver cover only)

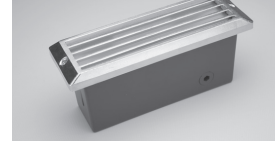


BL-CC
Brick Light
Concrete Cap
Required for all
concrete pour and
brick wall applications.

SPECIFICATIONS:

Voltage	120VAC power input. Integral Class 2 12V transformer per fixture.
Fixture Energy Rating	120VAC, 150mA, 18 watts
Average Bulb Life	10,000 hours
Color Temperature	2800K +/- 200K
Cover Finish	White, bronze, aluminum, black, stainless steel louver option
Can Finish	White with white reflector, fluorocarbon lacquer on stainless steel option
Construction	Both cover and can are die cast aluminum for corrosion protection, strength, weight, and consistency of finish. New stainless steel louver option!
Lens	Frosted tempered glass
Wiring Options	120V can be parallel wired ("daisy chained") up to 66 fixtures per 15A tap. Check local code and NEC for wiring selection
Dimming	Dimmable with an electronic low voltage dimmer on primary.
Agency Approval	UL listed Wet Location for all interior and exterior wall, ceiling and concrete pour applications.
Warranty	One year. See website for details.

NEW!



Stainless Steel Louver Cover
Recommended for use in corrosive environments as salt air, adjacent bodies of water, or installed in caustic materials such as limestone.

PROJECT:

TYPE:

NOTES:

NSL

NATIONAL SPECIALTY LIGHTING
www.nslusa.com